

## NEWSLETTER SPRING 2023

### Greetings from Our President



Dear friends,

Happy spring to you all!

Passover is right around the corner, and with it, an opportunity to help with an urgent matter.

The girls at our *Friendship House/Gagal 24/7* shelter have lost their home due to a fire that took place last month.

The damage that was done deemed the space inhabitable, and we were quickly forced to find a temporary housing solution for the month of March.

Your donations at this time will help the girls who are staying at the shelter significantly. They didn't just lose their safe space; they also lost what few worldly possessions they had.

On a much brighter note, this is the first newsletter of our 40th year. Indeed, ELEM has "40 Years of Saving Lives" under its belt, and the work continues!

We've restructured, launched new fields and new programs. The future looks bright for us and for the youth we serve.

We hope you will join us for our 40th Anniversary Ray of Hope Gala in October, so we can celebrate together on this extraordinary night.

Chag Pesach Sameach to you and yours, full of light and health,



Lenore Ruben  
President

## Events

### Save the Date!

Join us on October 12th, 2023, at Lavan in New York City to celebrate one of our biggest milestones - 40 years of transforming lives through ELEM's work!

We're planning a wonderful journey through our history, with moving highlights, special entertainment and special guests.

To RSVP and to inquire about our sponsorship opportunities, contact Liora at [attias@elem.org](mailto:attias@elem.org).

## Donor Spotlight - Howard Gluckman

“I am semi-retired now. I was a partner in a New York/New Jersey Certified Public Accounting firm affiliated with a large Israeli CPA firm. My area of expertise was auditing and taxation for large Israeli companies and their employees operating in the United States.

ELEM reaches a population of distressed youth for which, unfortunately, Israel has a significant need. ELEM is unique in this realm and has had measurable success where others have failed. I have recently donated to ELEM from my IRA account.”

### Howard on the benefits of donating to ELEM through an IRA:

There are advantages to contributing to ELEM from your individual retirement account (IRA) account. When you turn 70.5, you become eligible to donate up to \$100,000 annually from your IRA to a charity like ELEM through a process called a Qualified Charitable Distribution (QCD).

In addition, **anyone with an IRA** who is over the age of 73, is required to make taxable distributions from their account based on Internal Revenue Service tables (called required minimum distributions, or RMD). These distributions must be taken and are taxable. **A way to avoid taxation on part or all of these distributions is to have some of the distribution go directly to a qualified charitable organization like ELEM** (also via the same process through a QCD).

According to Howard, an additional reason he used a QCD was that "many retirees end up using the standard deduction that eliminates the benefit of their charitable contributions since they don't have large mortgages and there are limitations on deductions for state income taxes. **"Therefore, if someone is in a similar situation, he recommends everyone over the age of 70 and a half discuss with their tax advisor the benefits of donating using a QCD."**

To learn more about how to utilize this strategy for your giving to ELEM, contact our Chief Operating Officer, Liora Attias at [attias@elem.org](mailto:attias@elem.org).

\*\*Nothing contained in this Donor Spotlight constitutes investment, legal, tax or other advice by ELEM, ELEM USA, any staff from ELEM, or Howard Gluckman. The listed individuals are not investment, legal, or tax advisors. You should consider obtaining relevant and specific professional advice before making any financial or investment decision.\*\*

## Board Member Spotlight



We’re delighted to introduce our newest board member - Tracey Stulberg.

Tracey Stulberg, Ph.D. founded the Birmingham Family Therapy Clinic, Inc. in 1988 and the non -profit the Michigan Restorative Justice Project, in 2012. For the past 35 years Dr. Stulberg has provided systemic, trauma-informed therapy and restorative justice to survivors, offenders, and families healing from sexual abuse, physical violence/fatalities, human trafficking, and severe neglect. In addition, Dr. Stulberg works with court-mandated and attorney-referred clients (children and parents) dealing with high-conflict relationships, pre and post-divorce, reunification, blended family, and parental alienation issues.

Dr. Stulberg is honored to be a board member of ELEM-US and hopes to help ELEM be recognized in the U.S. for its exceptional work with youth in distress in Israel.

## News from Israel

### Fire at ELEM’s Homeless Women Shelter



Galgal center before and after the fire

Galgal, ELEM’s shelter for young women and teenage girls in Jerusalem was burned down.

Maya Baron, Head of the Extreme Risk Field at ELEM, shared: "In one moment, the place that was a safe haven for homeless young women caught fire, and ironically they were once again without a home. The young women, along with the staff, fled the thick smoke unharmed, but the mental damage runs deep."

ELEM arranged temporary accommodations for all the women. Sadly, the damage is too severe to rebuild and ELEM is now searching for a new home for the beloved shelter.

If you’d like to support the young women of Galgal, please donate [here](#).

## May the Workforce Be With You

We have been collaborating with our business partners to help at-risk young mothers enter the workforce and break the cycle of poverty and social exclusion.

In November, Axonius held an orientation day about employment for our youth, which included lectures and practical workshops, and in December Intel held a similar orientation for our young mothers who live in the South of Israel.

Our partners welcomed our young women with open arms, taught them how to express their talents, and motivated them. We also want to thank Bank Hapoalim and Nova for supporting our young mothers’ professional development efforts.

As one participant said: "This was a taste of the future I could have."



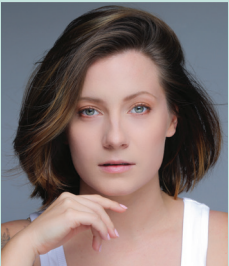
Our Young Mothers  
Receiving Training at Intel

## She’s Yentel!

ELEM graduate and a favorite of many of you, singer and actress Diana Golbi, has the leading role in Yentel at Israel’s National Theater, Habima!

In her youth, Diana attended ELEM’s *Outreach Van* in her hometown where staff encouraged her to pursue her talent. Diana later won the Israeli version of *American Idol* and has been leading a successful career as an actress and musician ever since.

We are so proud of her incredible success!



She's got talent  
no doubt!

## Mitzvah O'clock!

Ezra Abel just turned 13 and used his special day for a good deed, indeed!

He and his friends created kits with personal care products. They collected soaps, shampoo, instant meals, toothbrushes, blankets, and so much more! These kits will be distributed to the youth and young people who encounter our *Outreach Vans* on the streets or stay in one of our multiple shelters.

Mazel tov, Ezra, and thank you! We sure would love to see more young people like yourself doing good in the world!



Ezra and his mother,  
Rachel, and a special  
certificate from ELEM!

## Art By Youth

Our girls from ELEM’s Ramle Nur Center recently held a special exhibition for Women’s Day where they shared their personal stories through art. Even the Mayor of Ramle came to see their creations.

The Center serves young Arab women and girls who wish to make a change in their lives. S., one of the participants shared: “The Center is my second home. This is the first time I'm trying to communicate and talk about what I'm experiencing."

We love giving youth a platform to express themselves and amplify their voices!



We Love Empowered Women!

## Blast From The Past

It’s our 40th anniversary and we’d love to look back at some of our highlights!

In 1996 NASA launched the Mars Global Surveyor and ELEM launched its *Outreach Vans* program to explore a different space - the streets. Our vans now operate across Israel, meeting at-risk youth including homeless teens on their turf. The vans’ staff provides mentorship and support and helps youth acquire the services they need to get “Off the Streets and On to Life.”



## Join “Friends of ELEM”

We know you love seeing our great work helping Israel’s distressed youth. We would be honored if you became a “Friend of ELEM,” by becoming a yearly donor of \$1,000 or more. Friends receive “in the know” information, exclusive direct information from Israel, participation in quarterly Zoom calls with Israel and more.

## Get Involved

Consider making a donation. No amount is too small. Our children greatly appreciate anything you can give. If you want to volunteer in the USA contact us at [info@elem.org](mailto:info@elem.org). Get your child involved in a mitzvah project or create a fund to honor someone special.



Skadden



NILI LOTAN

*Pinna Tornai*



## Contact & Follow us:



ELEM.ORG



212.787.3337



INFO@ELEM.ORG



@ELEMUSA



@ELEMUSA1

### ELEM/Youth in Distress in Israel Officers

Ann Bialkin, Chair  
Lenore Ruben, President  
Lori Gosset, Vice President  
Alon Harnoy, Treasurer

